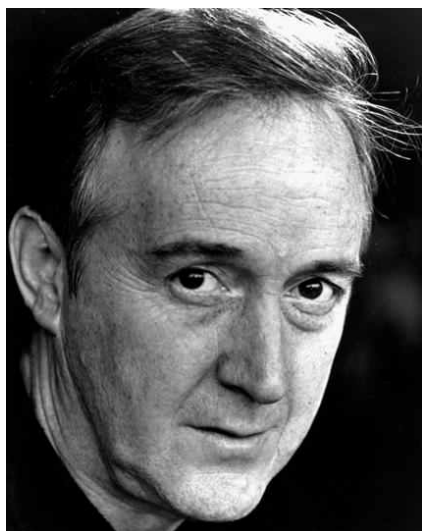
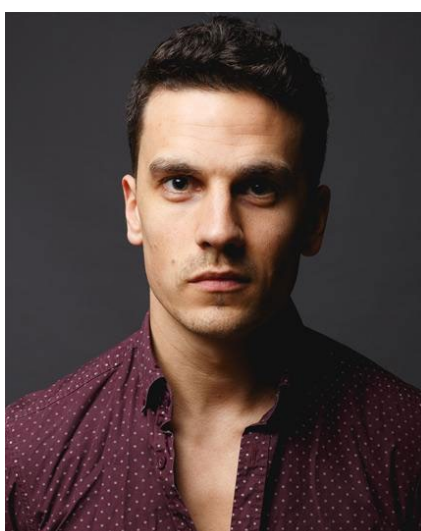


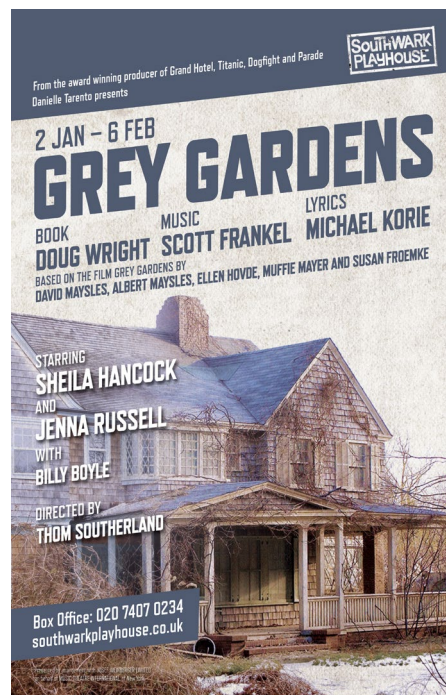
**Final cast announced for the European première of acclaimed Broadway musical *Grey Gardens* from the team behind *Titanic* and *Grand Hotel***



**Billy Boyle**



**Aaron Sidwell**



**Jeremy Legat**



**Ako Mitchell**



**Rachel Anne Rayham**

Final casting and the full creative team are announced today for the eagerly awaited European première of the Broadway musical *Grey Gardens*, based on an iconic 1975 documentary, telling the spectacular real life rise and fall of Jacqueline Kennedy Onassis's aunt and cousin, Edith and Edie Bouvier Beale.

Joining the previously announced Olivier Award-winning West End stars, **Sheila Hancock** and **Jenna Russell** are:

**Billy Boyle**, who has just finished two years playing Grandpa George in *Charlie and The Chocolate Factory* at the Theatre Royal Drury Lane, is a veteran of the West End stage having played leading roles in over 15 hit shows from his big break in *Maggie May* in 1964 to Barnaby in *Hello, Dolly!* at The Theatre Royal Drury Lane, Maurice in Disney's *Beauty and the Beast* and *Dirty Dancing*.

**Aaron Sidwell** joins the cast direct from starring as Johnny in Green Day's *American Idiot* at the Arts Theatre. His other starring roles include the original West End cast of *Loserville* (Garrick) the lead in *Cool Rider* (Duchess Theatre) and Carl Bruner in *Ghost The Musical*. He played Steven Beale in over 100 episodes of *EastEnders*.

**Jeremy Legat** most recently played Camille in *Thérèse Raquin* at Finborough Theatre and Park Theatre.

**Ako Mitchell's** West End roles include Mufasa in *The Lion King*, Sweaty Eddie in *Sister Act*, Gabriel in *Fences* and Mitch in Jamie Lloyd's première of *The 25th Annual Putnam County Spelling Bee* at the Donmar Warehouse

**Rachel Anne Rayham** has just played Louisa in *The Sound of Music*. This is her London professional debut.

The rest of the cast are child actors Alana Hinge, Grace Jenkins, Rebecca Nardin and Eleanor Waldron.

The full creative team are: Director Thom Southerland, Musical Supervisor Simon Lee, Musical Director Michael Bradley, Choreographer Lee Proud, Set Designer Tom Rogers, Lighting Designer Howard Hudson, Sound Designer Andrew Johnson, Costume Designer Jonathan Lipman, Producer/Casting Director Danielle Tarento.

**Grey Gardens**, with Book by Doug Wright, Music by Scott Frankel, Lyrics by Michael Korie, is produced by Danielle Tarento and directed by Thom Southerland, the award-winning team behind *Grand Hotel*, *Titanic*, *Parade* and *Mack & Mabel*.

It will open for a 6-week season in The Large at Southwark Playhouse from Saturday 2 January, 2016.

**Press night is Thursday 7 January at 7.30pm.**

Starting in 1941 at an engagement party at Grey Gardens, the Bouvier's mansion in East Hampton, Long Island, the musical tracks the progression of the two women's lives from American aristocrats to reclusive social outcasts living in such squalid conditions, in a home overrun by cats, that the Health Department deemed the mansion 'unfit for human habitation'.

LISTINGS INFO

Danielle Tarento  
presents the European Première of

# GREY GARDENS

Book by Doug Wright Music by Scott Frankel  
Lyrics by Michael Korie  
Based on the film Grey Gardens by  
David Maysles, Albert Maysles, Ellen Hovde,  
Muffie Mayer and Susan Froemke

Presented by arrangement with  
JOSEF WEINBERGER LIMITED

**Southwark Playhouse**  
The Large  
77-85 Newington Causeway  
London  
SE1 6BD

Box Office: 020 7407 0234  
[www.southwarkplayhouse.co.uk](http://www.southwarkplayhouse.co.uk)

**Saturday 2 January -  
Saturday 6 February**

Press night: Thursday 7 January at 7.30pm

Times: Monday - Saturday at 7.30pm Tuesday &  
Saturday matinee at 3.00pm (not January 5)

Ticket prices:  
£25.00/£20.00 concessions  
all previews £14.00 (2 - 6 January)